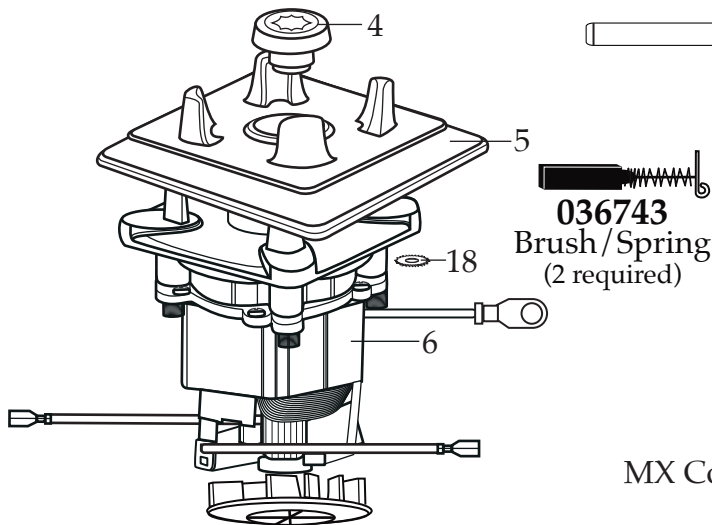


WARING COMMERCIAL

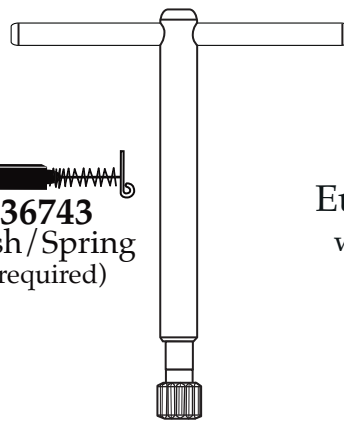
Europe Variable Speed Blenders
with 48 oz. Stackable Container

MX1200XTPEE MX1200XTPSEE

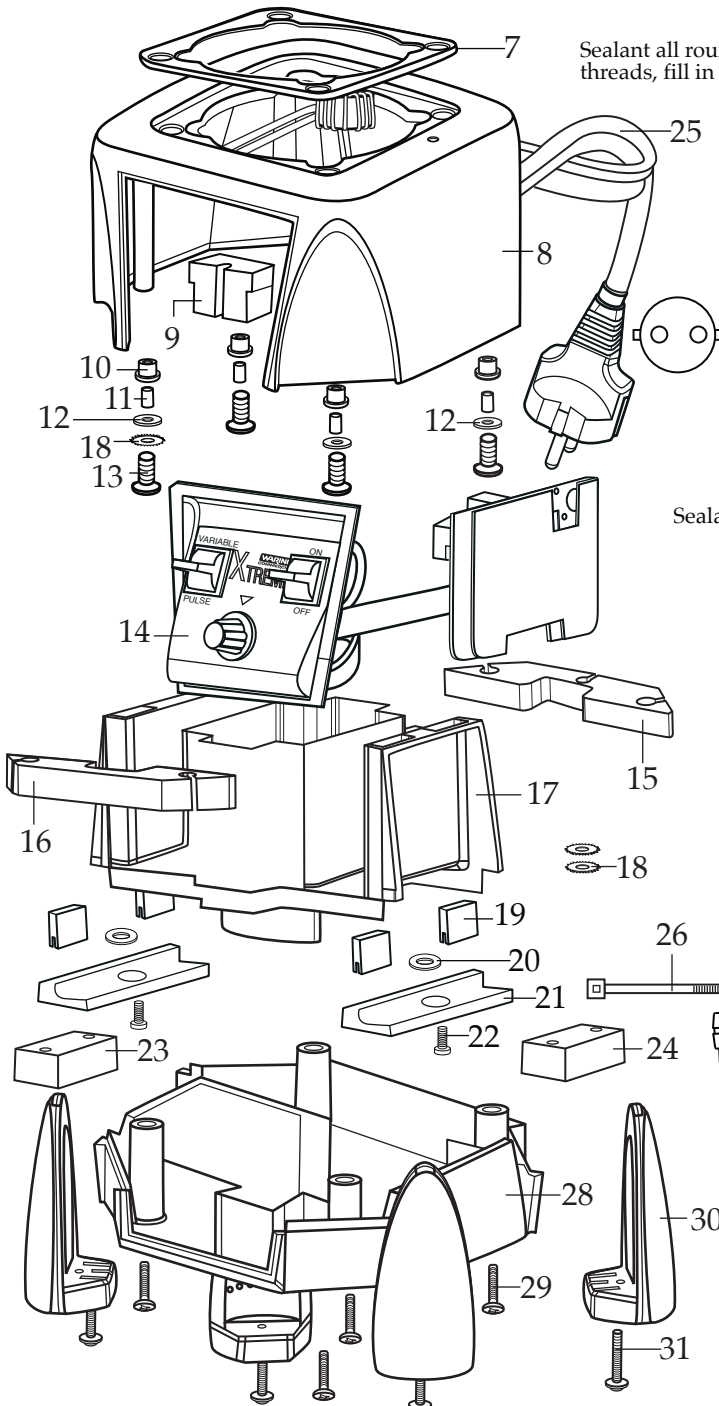
with Sound Enclosure
(only 1 unit built 12/10/2012)



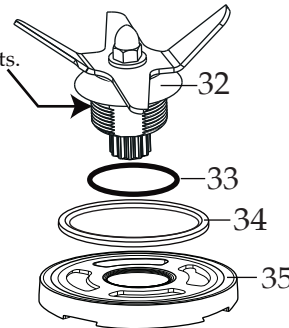
036743
Brush/Spring
(2 required)



503351
MX Coupling Wrench
(optional)



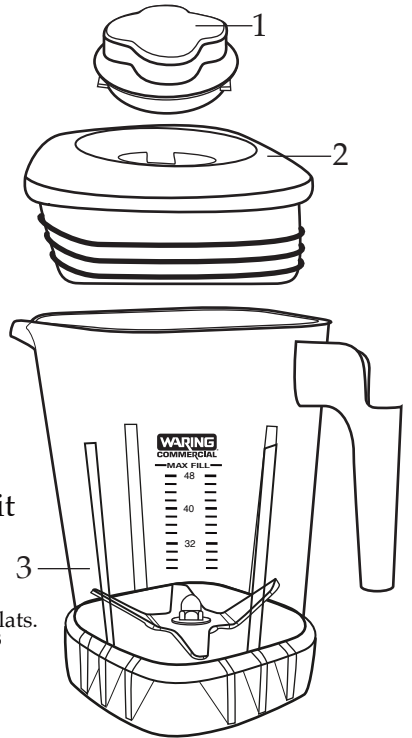
Sealant all round threads, fill in flats.



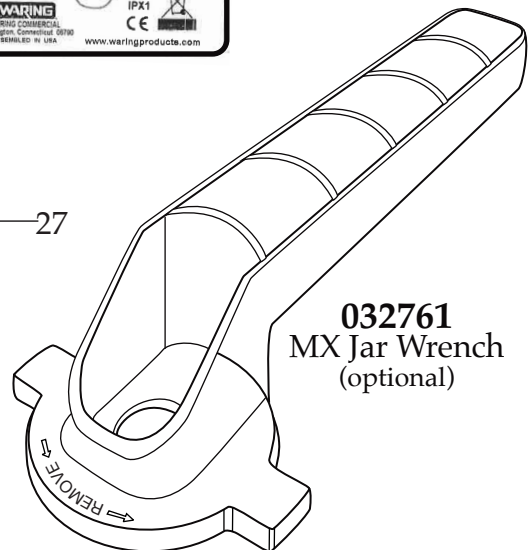
030889
Blending Assembly Kit

Notes for 503439:

Torque 100-125 in/lbs
Sealant all around the threads, fill in flats.
Dow Corning Sealant RTV 733



Date Code Location
YY|MM DD
year year | month month | day day



032761
MX Jar Wrench
(optional)

Catalog	Model	
MX1200XTPEE	MX1200XT21CE	
MX1200XTPSEE	MX1200XT22CE	MX1200XT22SEE
<i>(on units after 6/26/2008)</i>		

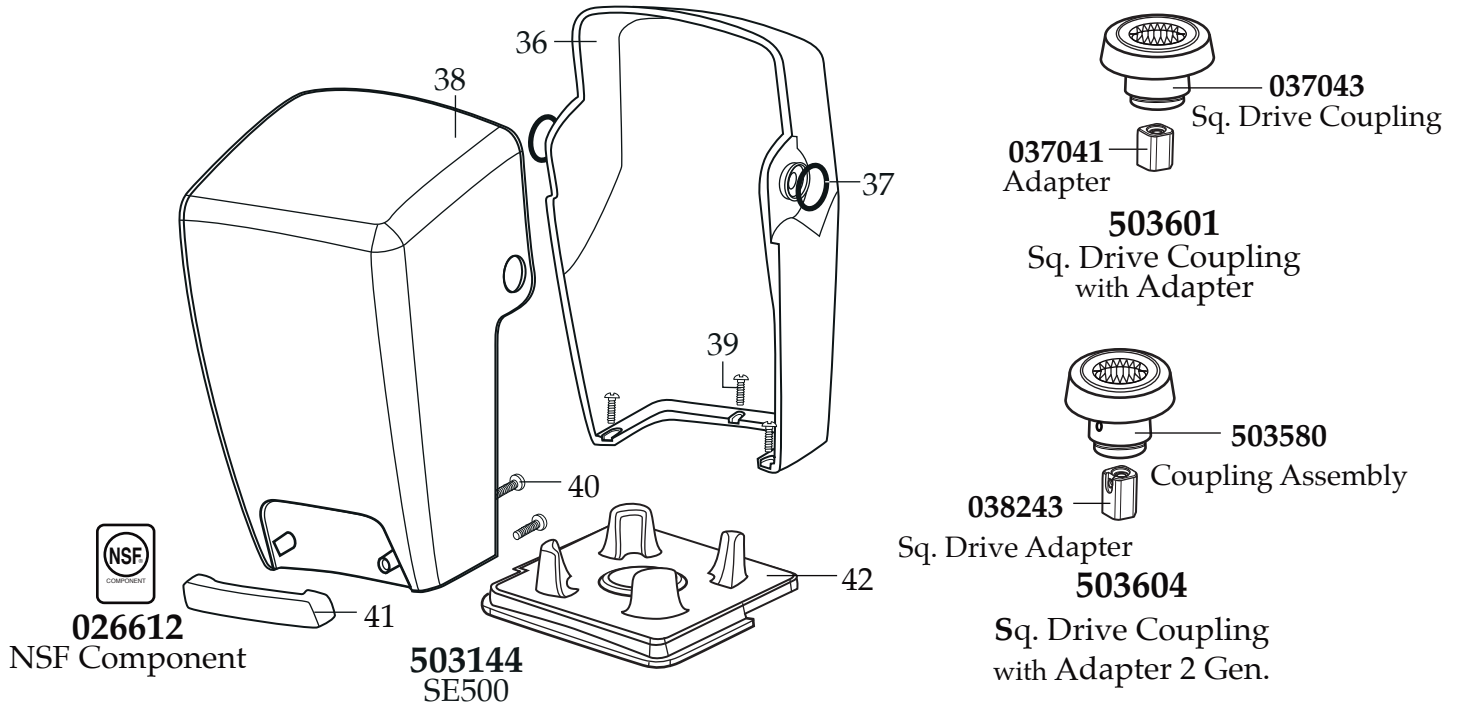


Illustration#	Part#	Description
1	028769-E	Jar Lid Cover
2	028768	Jar Lid
3	030888	48 oz. Stackable Raptor Container ONLY <i>(changed after 12/10/12)</i>
	503439	48 oz. Stackable Raptor Container Complete <i>(changed after 12/10/12)</i>
4	503601	Sq. Drive Coupling with Adapter <i>(on units after 3/29/2022)</i>
	503604	Sq. Drive Coupling with Adapter 2 Gen. <i>(changed after 1/7/2021)</i>
	028538	Drive Coupling
5	026442	Jar Pad
6	035399	Leili Motor with Sensor <i>(on units after 5/19/2017)</i>
	028824	ECM Motor with Sensor <i>(use 035399 with kit 503382-E-67)</i>
7	038278	Dampening Plate Gasket <i>(on units after 8/25/2022)</i>
	026437	Dampening Plate Gasket
8	503382-E-67	MX Housings, Ferrite Core & Cord <i>(on units after 5/19/2017)</i>
	503382-E	MX Housings, Ferrite Core & Cord <i>(on units after 12/10/12)</i>
9	028541	Motor Foam (2 required)
10	026439	Dampening Plate Bushing (4 required)
11	038486	Dampening Plate Sleeve (4 required <i>on units after 8/25/ 2022</i>)
	026453	Dampening Plate Sleeve (4 required)
12	026459	Washer (2 required)
13	028929	Sems (4 required)
14	036401	Control Panel with Interlock (XPrep <i>changed after 6/25/2018</i>) comes with switches-key board-main board-filter board
	034123	Control Panel (XPrep <i>on units after 12/10/12</i>)
	028568	Control Panel (Xtreme use 035024)
15	028248	Top Housing Foam Rear Baffle
16	028249	Top Housing Foam Front Baffle
17		<i>Motor Housing is Included with Illustration# 8</i>
18	002943	Washer (4 required)
19	034900	PCB Cushion (4 required <i>on units after 7/18/2019</i>)
20	037232	Flat Neoprene Washer (2 required <i>on units after 7/18/2019</i>)
21	037007	PCB Mounting Bracket (2 required <i>on units after 7/18/2019</i>)
22	013768	Screw (2 required <i>on units after 7/18/2019</i>)
23	028247	Bottom Housing Foam Baffle
24	028542	Foam Baffle
25		<i>Cord is Included with Illustration# 8</i>
26	013731	Cable Tie (3 required)
27	007556	Strain Relief <i>(on units after 5/31/2018)</i>
	035384	Strain Relief <i>(on units after 3/30/2016)</i>
	007556	Strain Relief
28		<i>Bottom Housing Included with Illustration# 8</i>
29	012505	Screw (4 required)
30	026430	Corner Post (4 required)

Catalog
 MX1200XTPEE MX1200XT21CE
 MX1200XTPSEE MX1200XT22CE MX1200XT22SEE
(on units after 6/26/2008)

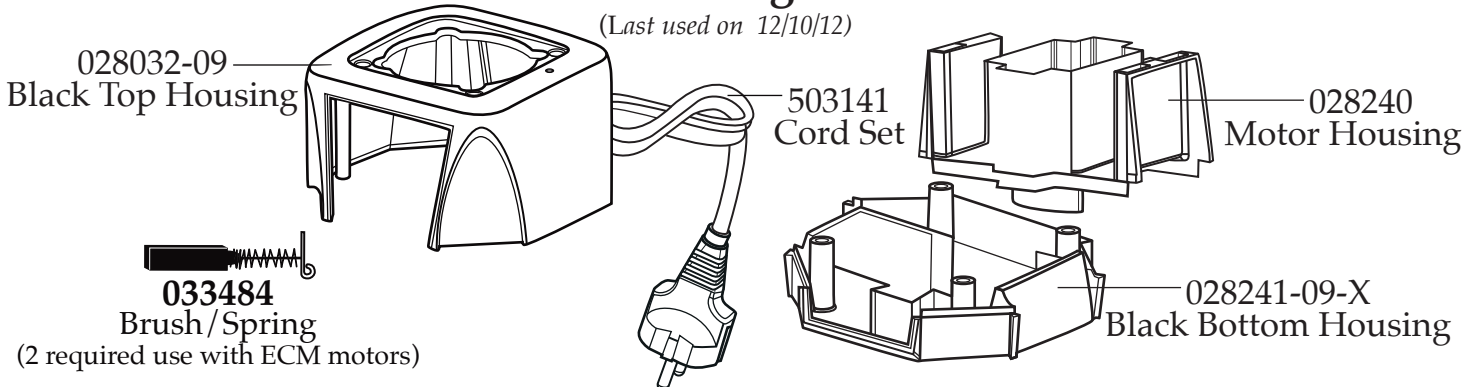
Waring Factory Service Center
 314 Ella T. Grasso Ave.
 Torrington, CT 06790
 Tele. 1-800-269-6640
 Fax 860-496-9017
 www.waringcommercialproducts.com

Illustration#	Part#	Description
31	028928	Sems (4 required)
32	503397	Blade Assembly
33	024271	O Ring
34	024268	Nut Gasket
35	029631	Bearing Holder Nut
36	028250-E	48 oz. Eastman Inner Sound Enclosure
37	027447	O Ring (2 required)
38	028251-E	48 oz. Eastman Outer Sound Enclosure
39	026461	Screw (3 required)
40	012505	Screw (2 required)
41	026434	Sound Enclosure Handle
42	026443	Sound Enclosure Jar Pad



Parts No Longer Used

(Last used on 12/10/12)



Catalog
 MX1200XTPEE MX1200XT21CE
 MX1200XTPSEE MX1200XT22CE MX1200XT22SEE
(on units after 6/26/2008)

Waring Factory Service Center
 314 Ella T. Grasso Ave.
 Torrington, CT 06790
 Tele. 1-800-269-6640
 Fax 860-496-9017
 www.waringcommercialproducts.com

